

PORSCHE DESIGN
TIMEPIECES

CHRONOTIMER SERIES 1 RENNSPORT REUNION V LIMITED EDITION





A LIMITED EDITION OF 25 TIMEPIECES.
EXCLUSIVELY DESIGNED IN CELEBRATION OF RENNSPORT REUNION V.

CHRONOTIMER SERIES 1 RENNSPORT REUNION V LIMITED EDITION

Precise. Purist. And uncompromisingly functional. In black and made of titanium. Exclusively limited to 25 timepieces worldwide. The Chronotimer Series 1 Rennsport Reunion V Limited Edition more than pays tribute to the heritage of Porsche Design Timepieces. It's a homage to the passion of Porsche Design to unite iconic design and technology in perfect harmony for more than 40 years now.

The ETA Valjoux 7750 movement and Porsche Design Icon rotor at the heart of the exclusive chronograph guarantee reliable precision. The 7-fold, double-sided, anti-glare sapphire glass ensures optimal readability, even under water.

The graphic elements of the extraordinary Limited Edition version have been kept especially narrow to optimize readability of the tachometer for measuring speed during motorsports. The iconic hole-punched design of the fine leather strap, with its distinctive blue decorative stitching, is a reference to the first motorsports watch. The shape of the dial and hands is based on the legendary predecessor of Porsche Design Timepieces, the Chronograph I.

The packaging of this Limited Edition is as exquisite as the timepiece itself, featuring a special Porsche Rennsport Reunion V plaque.

“GOOD DESIGN ONLY EXISTS
IN CONJUNCTION WITH ENGINEERING.”

Professor Ferdinand Alexander Porsche,
creator of Porsche Design and the famous 911 sports car.





60 TACHYMETER

RENNSPORT
REUNION

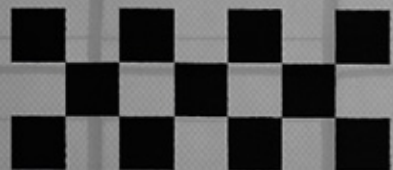
PORSCHE DESIGN

SWISS MADE

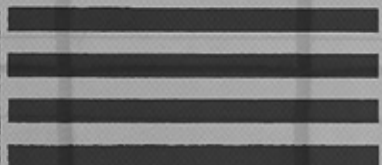
XXXXXX

XXXXXX

PORSCHE



RENNSPORT
REUNION



TECHNICAL SPECIFICATIONS

MOVEMENT | FUNCTIONS

Caliber ETA Valjoux 7750; automatic chronograph; Porsche Design Icon rotor; 48-hour power reserve; 28,800 vibrations per hour; 25 jewels; display of hours, minutes and seconds; stopwatch function [seconds, minutes and hours]; date window.

DIAL | HANDS

Matte black glass bead-blasted and galvanic dial; circular brushed chapter ring; matte white and matte blue numerals; matte white and matte grey indices; black galvanic and high-polish white luminescent bar indices; Rennsport Reunion V logo at 3 o'clock; small seconds hand at 9 o'clock; 30-minute counter at 12 o'clock and 12-hour counter at 6 o'clock circular brushed with polished edges; date window at 4 o'clock; black galvanic and high-polish white luminescent hour and minute hands; matte white small seconds hand; matte red chronograph seconds hand; matte white chronograph hour and minute hands with matte red tips.

CASE | CASE BACK

Glass bead-blasted titanium case with black titanium carbide coating; diameter 42 mm; height 14.62 mm; tachymeter scale on the bezel; screw-down crown; convex, scratch-resistant and double-coated anti-reflective sapphire crystal; screwed case back with sapphire crystal opening and Rennsport Reunion V logo; water-resistant to 5 bar.

STRAP | CLASP

Black perforated calfskin strap with blue cross-stitching; glass bead-blasted folding clasp made of titanium and stainless steel.



PORSCHE DESIGN STORES

Beverly Hills

236 N. Rodeo Drive | +1 310 205 0095
beverlyhills@porsche-design.com

Costa Mesa

South Coast Plaza | +1 714 662 2992
costamesa@porsche-design.com

Hawaii

Ala Moana Center | +1 808 945 3500
honolulu@porsche-design.com

Las Vegas

The Shops at Crystals | +1 702 736 7113
lasvegas@porsche-design.com

Los Angeles

Glendale Galleria | +1 818 500 0552
glendale@porsche-design.com

New York

501 Madison Avenue | +1 212 308 1786
newyork@porsche-design.com

465 West Broadway | +1 212 475 0747
soho@porsche-design.com

Available at select retailers.